

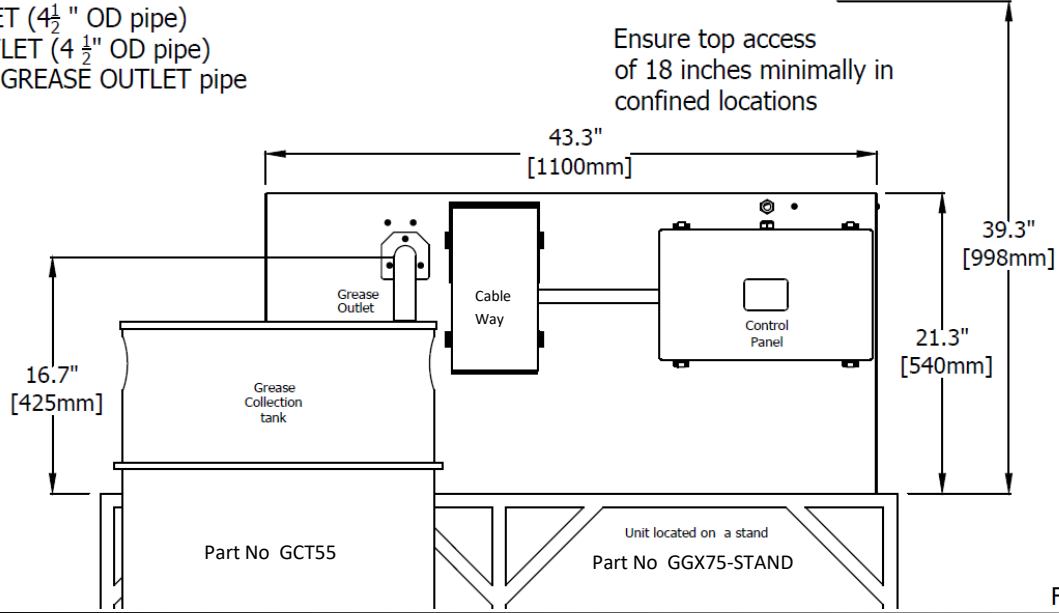


# GGX75-AST Grease Guardian Standard Specification

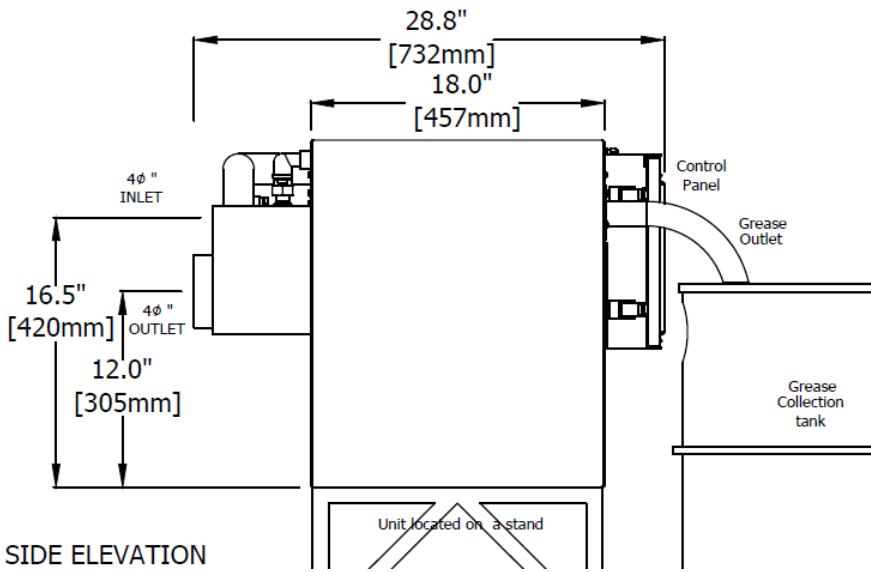
75GPM - 150 Pounds  
Grease Capacity

4" INLET (4½" OD pipe)  
4" OUTLET (4½" OD pipe)  
1½" OD GREASE OUTLET pipe

Ensure top access  
of 18 inches minimally in  
confined locations



FRONT VIEW



SIDE ELEVATION

### GREASE GUARDIAN STANDARD FEATURES

- 3 Year Warranty
- 16 gauge stainless steel welded tank
- Fully sealed air tight lid
- Universal flow direction
- PLC/HMI automatic controller
- BMS connectivity
- Long life skimming blade
- Automatic internal wash-down system
- Automatic inlet screen spray bar wash
- Automatic solids transfer (AST)
- 1/2" hot water connection
- Concealed plumbing & electrical connections
- No internal tank user maintenance required
- Integral flow control
- Integral gas trap
- Grease Guardian World asset management



### TECHNICAL DATA

Weight Empty /Full	240 /630 pounds
Material	16 gauge stainless steel
Interior	Stainless steel & acetyl components
Maximum flow rate	75 gallons per minute
Total grease retention capacity	150+ pounds
Solids transfer pump rating	70 gpm/13.5psi
Skimming rate / Low cycle	20 pounds per cycle
Skimming rate / High cycle	40 pounds per cycle
Available cycles / day	4
Programming / Control	Programmable Logic Controller
Hot water requirements	12 gpm @43.5 psi (temperature 100-140 deg F
Electrical load	110VAC 1070watts 12.7A



## GREASE GUARDIAN GGX75-AST

## KEY INSTALLATION NOTES

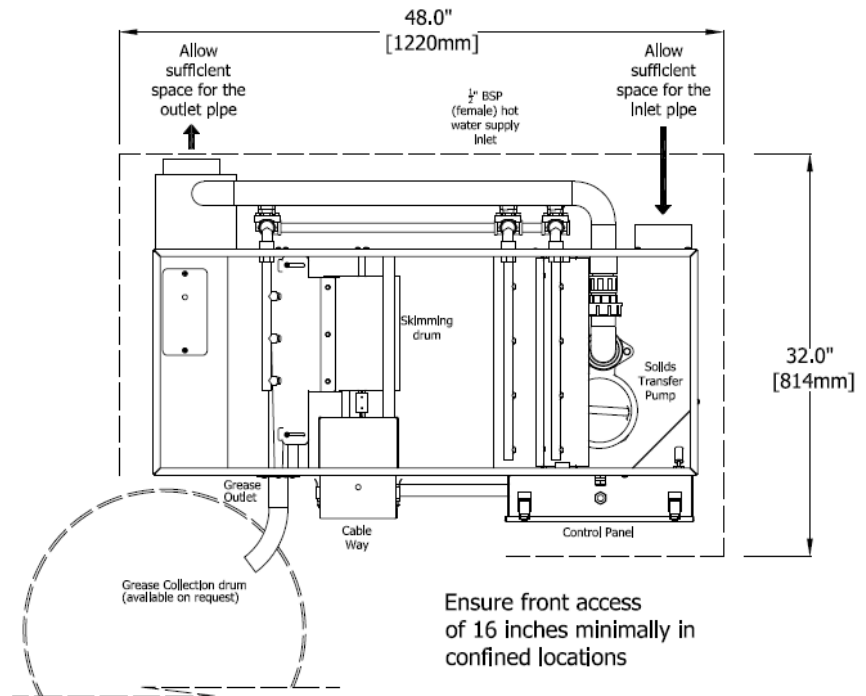
- Allow for the minimum clearances shown
- Allow 48" x 32" for tank (excluding grease container)
- Allow adequate clearance for solids strainer
- Allow adequate space for grease container
- Inlet port is uni-directional (single)
- Outlet port is uni-directional (single)
- Keep outlet piping at 1/8" per foot or greater
- Use rubber pipe connections provided
- Only switch on after filling with water
- Refer to full manual for full instructions

## HOT WATER SUPPLY REQUIREMENTS

- 1/2" incoming hot water pipe
- Backflow prevention
- Water hammer arrestor
- Wye strainer

## PRE-START UP CHECKS

- Ensure unit is positioned on a level surface and is plumbed securely
- Ensure electrical outlet is fitted with dedicated ground fault circuit breaker
- Ensure unit is filled with water to the correct level
- Ensure strainer basket is in position
- Set PLC date and time as detailed in the manual
- Ensure the grease container is in place



MINIMUM FLOOR SPACE RECOMMENDATION

## SPECIFICATION

Install \_\_\_\_\_ Grease Guardian Model GGX75-AST, self-cleaning automatic grease removal unit. 16 gauge fully welded 304 stainless steel tank, stainless steel internal baffle, fully sealed air tight stainless steel lid and robust stainless steel clamps, heavy duty stainless steel solids strainer screen, uni-directional inlet and outlet flow connections, with easy fit pipe couplings, concealed plumbing and electrical connections, 75 gallon per minute flowrate, 150+ pounds grease retention capacity, and skimming rate of 20/40 pounds per low/high cycle. The GGX75AST is supplied with a stainless steel rotating skimming drum, integral gas trap, integral flow control, totally enclosed geared drive unit, 600 watt immersion heater with self-regulating safety control, programmable controller and interface with energy saving mode. Self cleaning Automatic Solids Transfer (AST) feature via built in submersible solids transfer pump. The GGX75-AST is suitable for floor mounting. The GGX75AST is electrically tested and approved MET Labs to UL499 and CSA C22-2 88-1952 standards. 3 year warranty is standard.

## Electrical Details

GGX75-AST 110VAC 1070 Watts 12.7A



# Grease Guardian

Automatic Grease  
Recovery Units

## General Details

### Grease Guardian X Range

#### Grease Guardian GGX7 to GGX35—Point Source

The Grease Guardian Point Source range comprises of the **GGX7**, **GGX15**, **GGX20**, **GGX25** and **GGX35**. This allows Grease Guardian to cover a wide range of applications from single bay sinks such as pot wash or pre-rinse, up to large 3 bay sinks or multiple sink applications.

	<b>GGX7</b>	<b>GGX15</b>	<b>GGX20</b>	<b>GGX25</b>	<b>GGX35</b>
Flowrate	7 GPM	15 GPM	20 GPM	25 GPM	35 GPM
Grease Capacity	15 pounds	30 pounds	40 pounds	50 pounds	70 pounds
Inlet size	2"	2"	2"	2"	3"
Outlet size	2"	2"	2"	2"	3"
Overall length	25.5	31	32.5	32.5	41
Height	12.5	13.5	15	16.5	16.5
Width	15	15	15	15	15
Inlet height	9.5	9.5	11	12.5	13
Outlet height	4.5	4.5	6	7.5	8.5

#### Grease Guardian GGX50 to GGX125—Centralized Systems

The Grease Guardian Centralized System range comprises of the **GGX50**, **GGX75IS**, **GGX75AST**, **GGX125IS** and **GGX125AST**. This allows Grease Guardian to cover a wide range of large applications from large restaurants, to hotels, hospitals and universities.



	<b>GGX50</b>	<b>GGX75</b>	<b>GGX125</b>
Flowrate	50 GPM	75 GPM	125 GPM
Grease Capacity	100 pounds	150 pounds	250 pounds
Inlet size	3"	4"	4"
Outlet size	3"	4"	4"
Overall length	40	48.4	59.1
Height	18	21.3	24.4
Width	24.2	24.2	28.8
Inlet height	12.5	16.6	18.8
Outlet height	9	12.5	15.2

### APPROVED SYSTEM



#### Product Acceptance

Massachusetts Board of State  
Examiners of Plumbers and Gas  
Fitters